

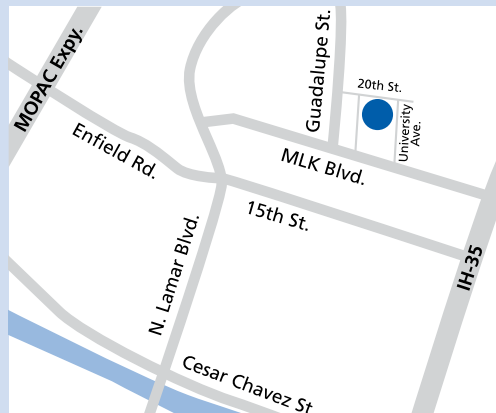


**AUSTIN ATTRACTIONS:**  
Find a listing of activities occurring that weekend at [AustinTexas.org](http://AustinTexas.org).

**CONFERENCE LOCATION**

The conference is being held at the AT&T Executive Education and Conference Center at The University of Texas at Austin.

Situated conveniently in the heart of Austin activity and on the university campus, the center offers inspiring views of the university's tower, the State Capitol and its serene central courtyard.



The center is located at 1900 University Avenue, Austin, Texas 78731. Reservations are subject to availability. To make a reservation, call 512-404-3600 or 877-744-8822, or go to [MeetAtTexas.com](http://MeetAtTexas.com).

**PARKING**

Validated parking is available in the hotel garage. The garage entrance faces 20th Street. Validation will be provided upon check-in at the registration table. If you choose to park in one of the surrounding campus lots or campus parking garages you will be responsible for your own parking fees.

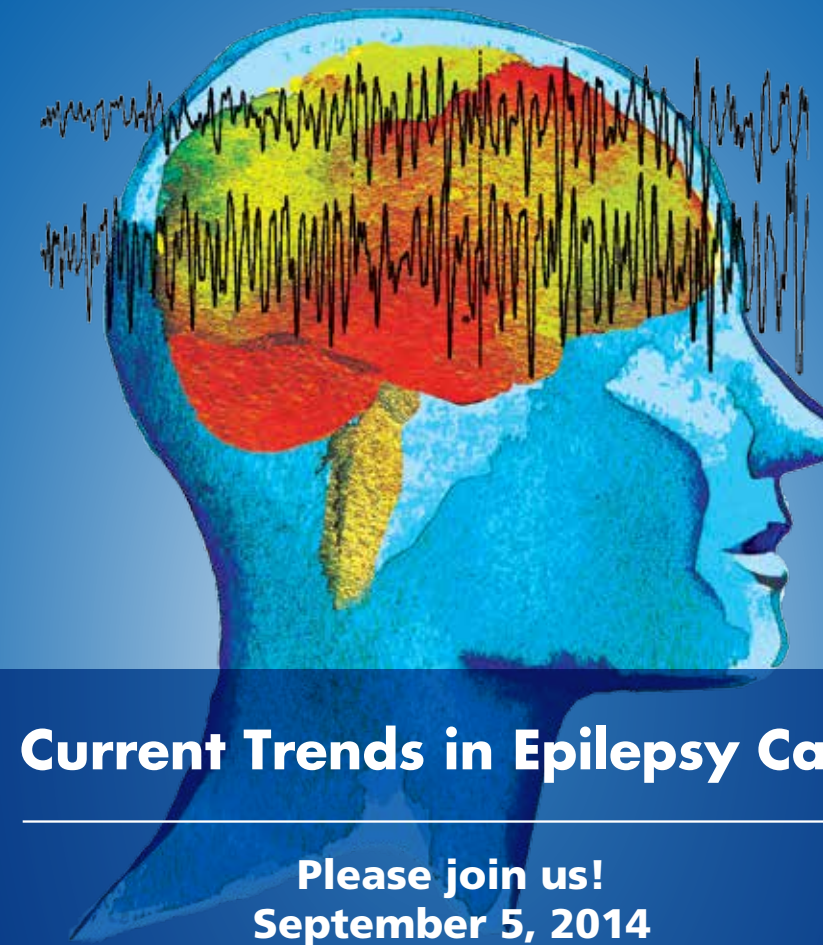
**DIRECTIONS TO CONFERENCE ROOM**

Take the "Conference" elevator to floor M1. Take a right once you exit the elevator and head toward the end of the hall. The conference will be held in room 102.

**ADDITIONAL INFORMATION**

For more information please visit [Seton.net/epilepsy](http://Seton.net/epilepsy) or contact Karen Perrone at 512-324-7000 x72450 or [KPerrone@seton.org](mailto:KPerrone@seton.org).

Seton Family of Hospitals  
Seton Brain & Spine Institute  
1400 N. IH-35, Suite 300  
Austin, TX 78701



**Current Trends in Epilepsy Care**

**Please join us!  
September 5, 2014**

AT&T Executive Education and Conference Center  
Austin, Texas 78705

Presented by:



REDEFINING WHAT IS POSSIBLE



## DESCRIPTION

This conference is designed for health care professionals who manage patients with epilepsy. Experts in the field of epilepsy will review the diagnostic challenges and the emerging trends in epilepsy management with antiepileptic drugs, seizure control devices and surgical therapy.

## OBJECTIVES

- List the various epilepsy syndromes that affect children and adults
- Describe the applicability of advanced techniques in the diagnosis of intractable epilepsy
- Describe the latest advances in the treatment of epilepsy using various modalities

## AUDIENCE

The primary target audience will include physicians who are responsible for caring for the epilepsy patient population including neurologists, neurosurgeons, neuropsychologists, epileptologists, primary care providers, advanced practice nurses and physician assistants.

## ACCREDITATION (CME)

The Seton Healthcare Family is accredited by the Texas Medical Association to provide continuing medical education for physicians.

The Seton Healthcare Family designates this live activity for a maximum of 6.0 *AMA PRA Category 1 Credit(s)*™. Physicians should claim only the credit commensurate with the extent of their participation in the activity.

The presentation “Epilepsy Considerations: Driving & Ethics” has been designated by Seton Healthcare Family for 1 hour of education in medical ethics and/or professional responsibility.

## ACCREDITATION (CNE)

Seton Healthcare Family is an approved provider of continuing nursing education by the Texas Nurses Association, an accredited approver by the American Nurses Credentialing Center’s Commission on Accreditation. Upon successful completion, this activity will provide 6.0 contact hours.

## SPEAKERS

### **Bassel W. Abou-Khalil, MD**

Professor & Director  
*Vanderbilt Epilepsy Program*  
*Vanderbilt University Medical Center*

### **Sara Austin, MD, FAAN**

Neurologist  
(EMG, Neuromuscular Medicine)  
Austin, Texas

### **Deborah Briggs, MD**

Epileptologist  
*Seton Brain & Spine Institute Adult Epilepsy Program*  
Assistant Professor of Neurology  
*UT Southwestern-Austin Program*

### **Robert J. Buchanan, KM, MD**

Neurosurgeon  
*Seton Brain & Spine Institute Adult Epilepsy Program*  
Associate Professor of Psychology and Neuroscience  
*UT Austin & UT Southwestern-Austin Program*

### **Dave Clarke, MD, MBBS**

Epileptologist & Director  
*Dell Children’s Comprehensive Epilepsy Program*

### **Karen C. Keough, MD**

Epileptologist  
*Dell Children’s Comprehensive Epilepsy Program*

### **Mark Lee, MD, PhD, FACS**

Neurosurgeon & Co-Director  
*Dell Children’s Comprehensive Epilepsy Program*

### **Mark McManis, PhD**

MEG Unit Director  
*Dell Children’s Comprehensive Epilepsy Program*

### **Pradeep Modur, MD, MS**

Epileptologist & Director  
*Seton Brain & Spine Institute Adult Epilepsy Program*  
Associate Professor of Neurology  
*UT Southwestern-Austin Program*

### **Jason Shen, MD**

Epileptologist  
*Seton Brain & Spine Institute Adult Epilepsy Program*  
Assistant Professor of Neurology  
*UT Southwestern-Austin Program*

### **Elizabeth Wedberg, RN, MSN, ACNS-BC, CNRN**

*Seton Brain & Spine Institute Adult Epilepsy Program*

## AGENDA

7:30 a.m.	Registration & Continental Breakfast	1:00	Temporal and Extratemporal Resections <i>Robert J. Buchanan, KM, MD</i>
8:00	Welcome & Introduction <i>Pradeep Modur, MD, MS</i>	1:20	Minimally Invasive to Radical Epilepsy Surgeries <i>Mark Lee, MD, PhD, FACS</i>
	Morning Session Moderator: <i>Pradeep Modur, MD, MS</i>	1:40	Magnetoencephalography in Presurgical Evaluation <i>Mark McManis, PhD</i>
8:05	Neonates to Adults: Age-related Epilepsy Syndromes <i>Dave Clarke, MD, MBBS</i>	2:00	Panel Discussion <i>Pradeep Modur, MD, MS; Robert J. Buchanan, KM, MD; Mark Lee, MD, PhD, FACS; Mark McManis, PhD</i>
8:45	Epilepsy in Special Groups: Managing Women with Epilepsy <i>Deborah Briggs, MD</i>	2:15	Coffee Break & Exhibits
9:15	Coffee Break & Exhibits	2:30	Community Collaboration, Pediatric to Adult Transition <i>Karen C. Keough, MD</i>
9:35	Challenging Cases - What to Do? <i>Elizabeth Wedberg, RN, MSN, ACNS-BC, CNRN</i>	3:00	Epilepsy Considerations: Driving and Ethics <i>Sara Austin, MD, FAAN</i>
9:50	Neurostimulation: Devices for Epilepsy Management <i>Jason Shen, MD</i>	4:00	Adjournment
10:30	Keynote Speaker New AEDs: Is Rational Polytherapy a Reality? <i>Bassel W. Abou-Khalil, MD</i>		
11:15	Panel Discussion <i>Dave Clarke, MD, MBBS; Deborah Briggs, MD; Jason Shen, MD; Bassel W. Abou-Khalil, MD</i>		
11:35	Luncheon & Exhibits		
	Afternoon Session Moderator: <i>Jason Shen, MD</i>		
12:35 p.m.	Introduction <i>Jason Shen, MD</i>		
12:40	Presurgical Evaluation: New Techniques for Seizure Localization <i>Pradeep Modur, MD, MS</i>		

## REGISTRATION FEES

Advanced registration for the symposium is important as seating is limited. Due to limited seating, onsite registration is not guaranteed.

Physicians:	\$125
Nurses:	\$ 70
Residents:	Free

## Register online at: [Seton.net/epilepsy](http://Seton.net/epilepsy)

\*Full refunds will be given for cancellations made by August 25, 2014.